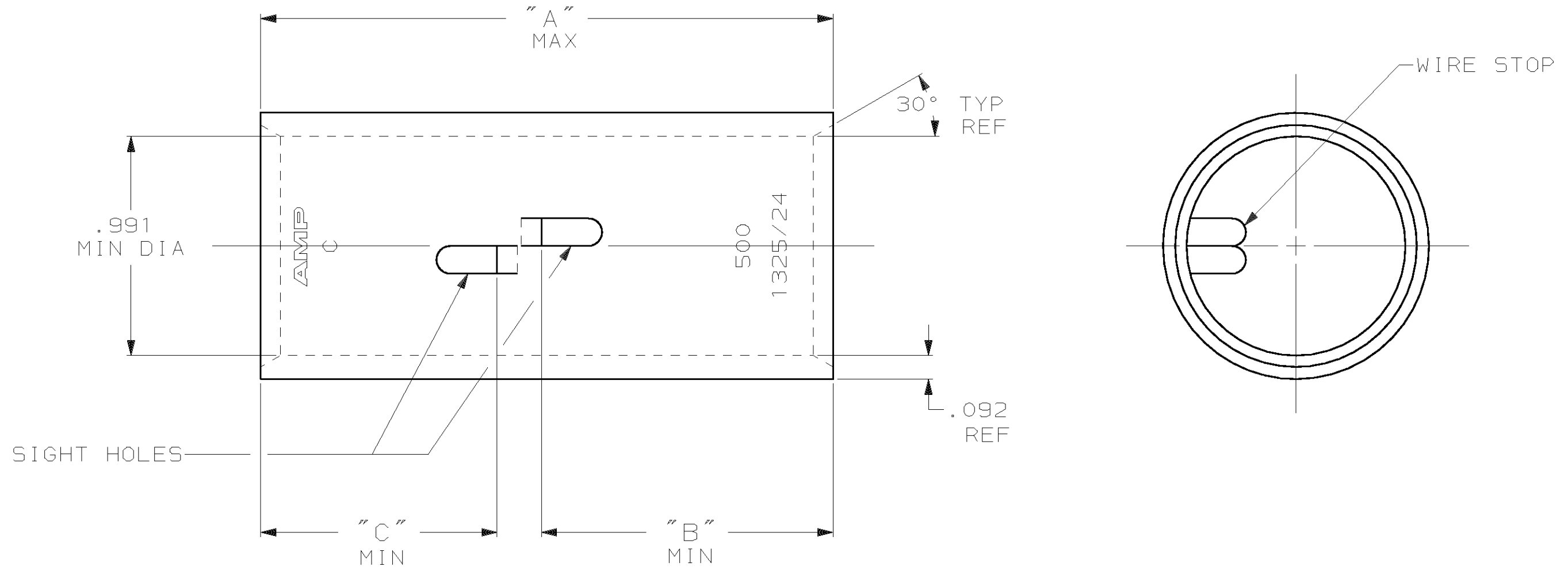


THIS DRAWING IS UNPUBLISHED. RELEASED FOR PUBLICATION, 19 .
 © COPYRIGHT 19 BY AMP INCORPORATED. ALL INTERNATIONAL RIGHTS RESERVED.

LOC	DIST	P	F	REVISIONS				
G	86			ZONE	LTR	DESCRIPTION	DATE	APPD
					P	REV PER 0G3A-0637-01	030CT02	JR/MS



- ① TIN PL .000150 MIN THK PER ASTM B 545
- ② PART NO: 324466; .243 LB.
PART NO: 1-324466-0; .243 LB.
PART NO: 2-324466-1; .243 LB.
PART NO: 2-324466-2; .269 LB.
- ③ RED COLOR CODE
- ④ CLEANED, UNPLATED

OBSOLETE	1.07	1.32	2.64	①	450-550 MCM	COPPER ASTM-B-75 ANNEALED	2-324466-2	
	1.07	1.07	2.41	① ③			2-324466-1	
	"C"	"B"	"A"	④	FINISH	MATERIAL	1-324466-0	
	DO NOT SCALE PRINT. UNLESS SPECIFIED DIMENSIONS IN INCHES TOLERANCES ON: 2 PLC DEC ± - 3 PLC DEC ± - ANGLES ± -				DR 4/24/89 DK SCHRUM	AMP INCORPORATED Harrisburg, Pa. 17105	324466	
MATERIAL SEE TABLE				CHK 4/24/89 MS FEHER	NAME SPLICE, BUTT, AMPPOWER WIRE SIZE: 500 MCM			
FINISH SEE TABLE				APPD 11/8/89 WJ VOCKROTH			SIZE B	FSCM NO 00779
				APPD 11/8/89 TL SHUTTER			DRAWING NO 324466	SCALE 2:1
				PRODUCT SPEC -	WEIGHT ①	SHEET 1 OF 1		